



RAJA AMPAT & BANDA ISLANDS INDONESIA

16. - 28. September 2024 (Sorong - Ambon)

CARLU DIVE
TRAVEL

An underwater photograph showing a group of divers swimming in clear blue water. In the foreground, there is a large, vibrant red sea fan coral. The background shows a boat on the surface and a diverse coral reef below. The text is overlaid in white, bold, sans-serif font.

13 DAY ADVENTURE TO MISOOL AND RAJA AMPAT

12 NIGHTS ON A LIVEBOARD

23-28 DIVES

A LIFETIME OF MEMORIES

Introduction

An underwater photograph showing a vibrant coral reef. In the foreground, there is a large, dense cluster of red, branching coral. The background is filled with various other coral species and several divers swimming in the clear blue water. The lighting is bright, highlighting the colors of the reef.

Indonesia is a destination that offers so much above and below water: a staggering diversity of marine life ranging from the smallest to the largest such as pygmy seahorses to whale sharks and an amazing variety in between.

Raja Ampat is located off the northwestern tip of the Bird's Head peninsula on the island of New Guinea, in the West Papua province of Indonesia. According to Conservation International, marine studies suggest that the diversity of marine life in the Raja Ampat area is the highest recorded on Earth. The diversity is considerably higher than any other area sampled in the coral triangle made up of Indonesia, the Philippines and Papua New Guinea. The coral triangle is the heart of the world's coral reef biodiversity, making Raja Ampat arguably the richest coral reef ecosystem in the world.

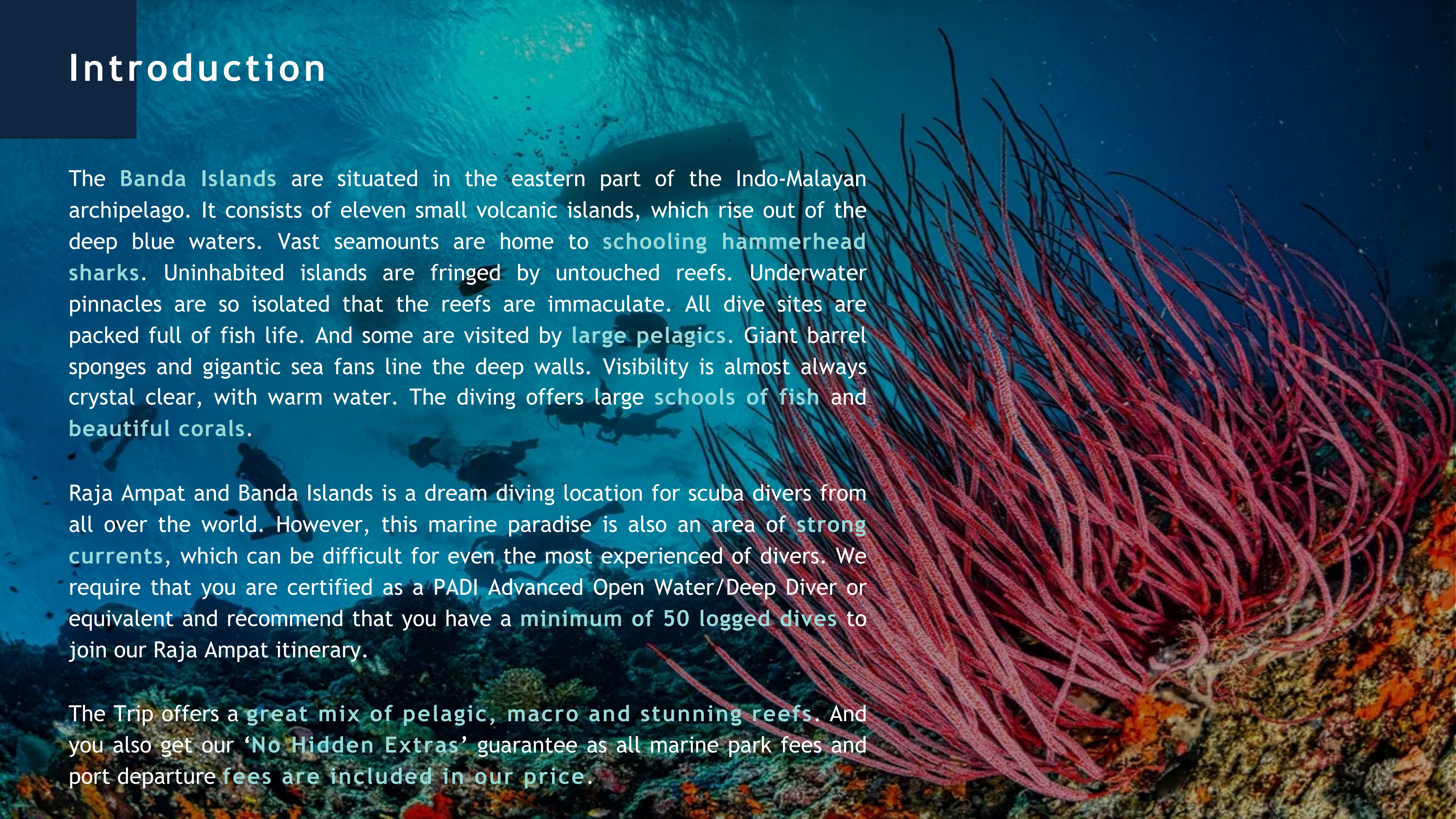
Raja Ampat, or the Four Kings, is an Archipelago, comprising more than 1,500 small islands, cays, and shoals. It covers more than 40,000 km² of land and sea, which also contains Cenderawasih Bay, the largest marine national park in Indonesia.

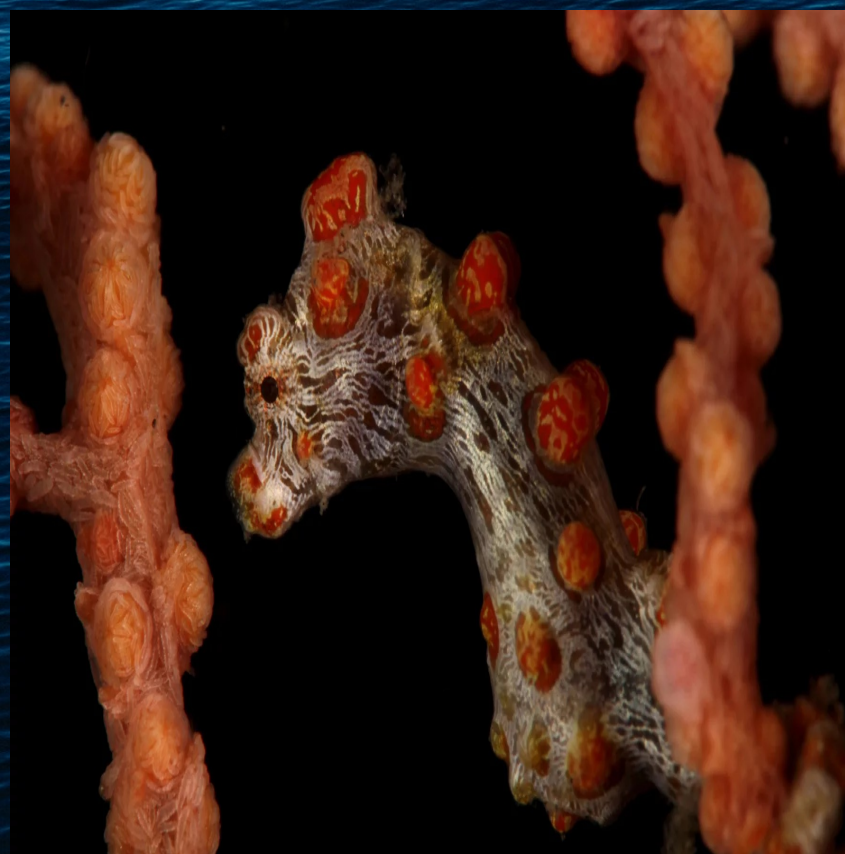
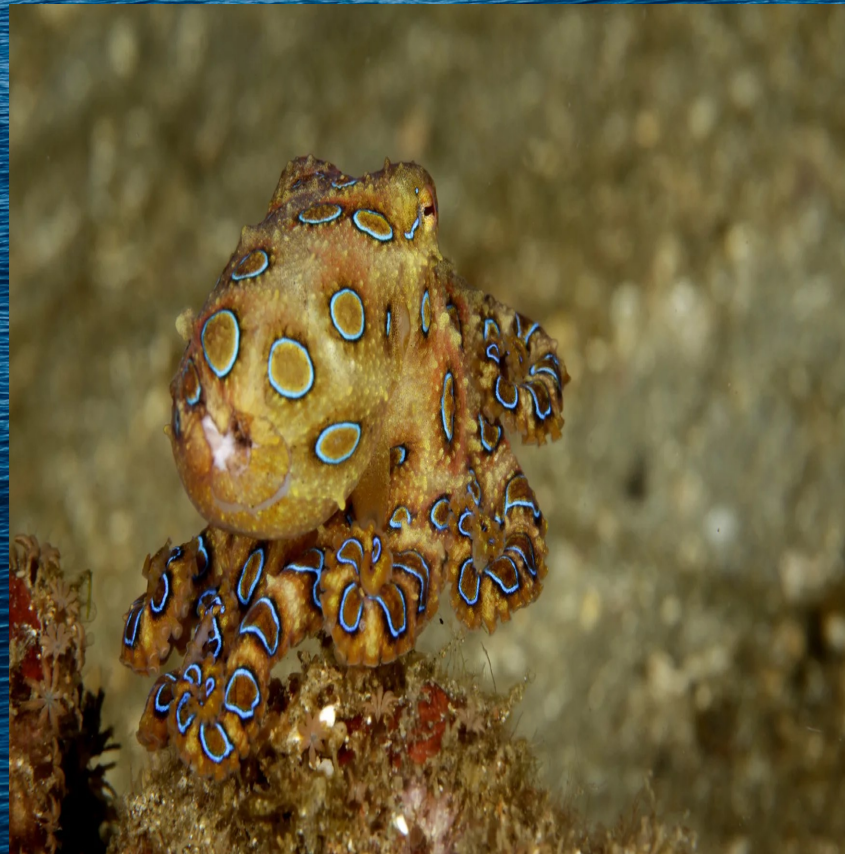
Introduction

The **Banda Islands** are situated in the eastern part of the Indo-Malayan archipelago. It consists of eleven small volcanic islands, which rise out of the deep blue waters. Vast seamounts are home to **schooling hammerhead sharks**. Uninhabited islands are fringed by untouched reefs. Underwater pinnacles are so isolated that the reefs are immaculate. All dive sites are packed full of fish life. And some are visited by **large pelagics**. Giant barrel sponges and gigantic sea fans line the deep walls. Visibility is almost always crystal clear, with warm water. The diving offers **large schools of fish** and **beautiful corals**.

Raja Ampat and Banda Islands is a dream diving location for scuba divers from all over the world. However, this marine paradise is also an area of **strong currents**, which can be difficult for even the most experienced of divers. We require that you are certified as a PADI Advanced Open Water/Deep Diver or equivalent and recommend that you have a **minimum of 50 logged dives** to join our Raja Ampat itinerary.

The Trip offers a **great mix of pelagic, macro and stunning reefs**. And you also get our **'No Hidden Extras'** guarantee as all marine park fees and port departure **fees are included in our price**.





ITINERARY

Day 1

Pick up at Sorong Airport or your hotel. 9:00am transfer to Emperor Harmoni. Once onboard there will be a safety briefing, crew introduction, complete and check dive paperwork, cabin allocation and boat orientation. The first dive is a check dive.

Day 2 - 12

We will do 2-3 dives per day, except for the days we have a long crossing. In that scenario we will only do 2 dives.

There are many chances to see sharks, mantas and other pelagics combined with pristine reefs. Get ready for the immensity of marine life, colors and creatures that are only found in these waters. And be prepared to visit remote islands.

Day 12

On the last diving day, 2 dives are available in the morning whilst observing the rule of no diving within 24 hours of reaching altitude. We return to port at approximately 1pm and moor here overnight. Evening-time pack up diving equipment and settle any outstanding bills ready to depart for the airport or hotel the following morning

Day 13

Breakfast in the morning. Check out at 12:00pm and transfer from Emperor Harmoni to Ambon Airport or your hotel of choice.

From here you decide what you want to do 😊

DAY 1

Pick up at Sorong Airport (SOQ). We recommend that you arrive at Sorong the night before. One of our staff members will be waiting for you at the airport in the morning. At 9:00am our free transfer will take you to EMPEROR HARMONI. Upon arrival we will do the check in, briefing of the boat, diving and itinerary. We will have lunch and dinner on board. The sailing starts already in the afternoon.

DAY 2-12

The planned route (condition depending) will take a trip around Banda Islands, Gam, Penemu, Pelee, Arborek, Cape Kri/Dampier Strait, Daram, Wayilbatan, Fiabacet. While onboard, you will experience a 23-28 dive program (weather depending) that includes both day and night dives. There is optional snorkeling.

DAY 13

12:00am check out. Our transfer will take you back to Ambon Airport (SOQ) or a hotel of your choice. If the return flight leaves in the afternoon there is a day hotel option near the airport.

HIGHLIGHTS

- Centre of the Coral Triangle, Raja Ampat is the most biodiverse place on earth.
- Sunset Dive for the Mandarin fish in Banda Neira.
- Chance to see hammerheads, manta and other pelagic action combined with colourful pristine reefs.
- Copious fish life, immense colours and mysterious critters, truly something for everyone.
- Visit the original Spice Islands.

The Sorong to Ambon cruise is special because it takes in two magnificent regions in the one cruise. Beginning in Sorong we will be rounding the east coast of Seram and rejoining the south and central sections of Raja Ampat. South Raja Ampat is arguably one of the best dive locations worldwide. Then we head to the Banda Islands (original Spice Islands), which will offer the opportunity for some pelagic action and hopefully hammerheads too.

Dive Sites & Excursion

This cruise will take in the Banda Islands plus the Southern and Central sections of Raja Ampat.

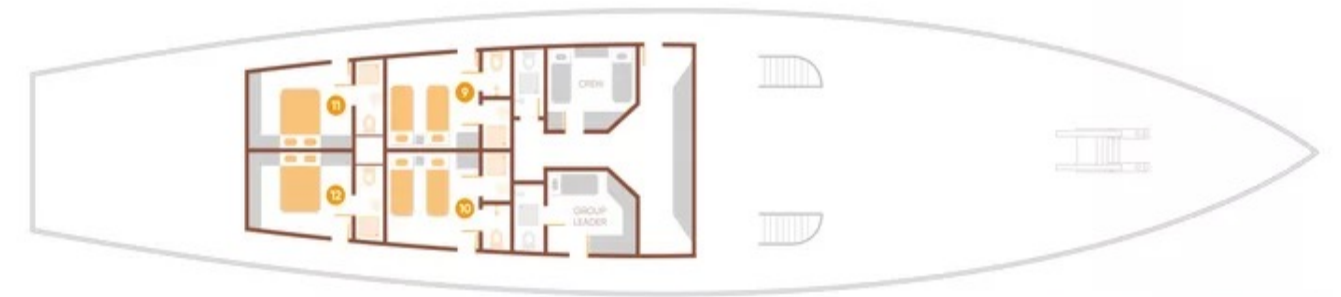
- **Raja Ampat Central Section:** Gam, Penemu, Arborek, Cape Kri Area
- **Raja Ampat Southern Section:** Daram, Wayilbatan, Fiabacet, Pelee
- **Banda Islands:** Pohon Miring, Batu Kapal, Batu Kapal Pinnacle, Banda Neira Jetty and Lava Flow
- **Banda Land Visits:** On this cruise we visit Banda Neira to see the nutmeg plantation, historic forts and small Maritime Museum. A half day excursion

EMPEROR HARMONI LIVEABOARD



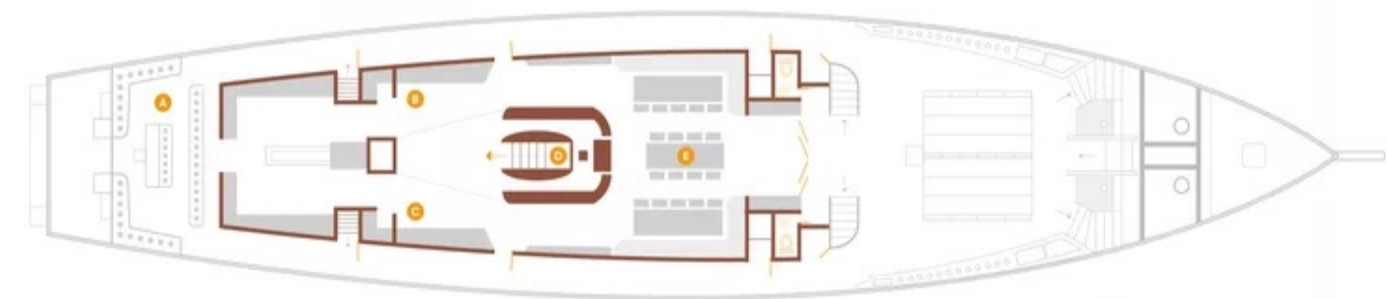
EMPEROR HARMONI

UPPER DECK



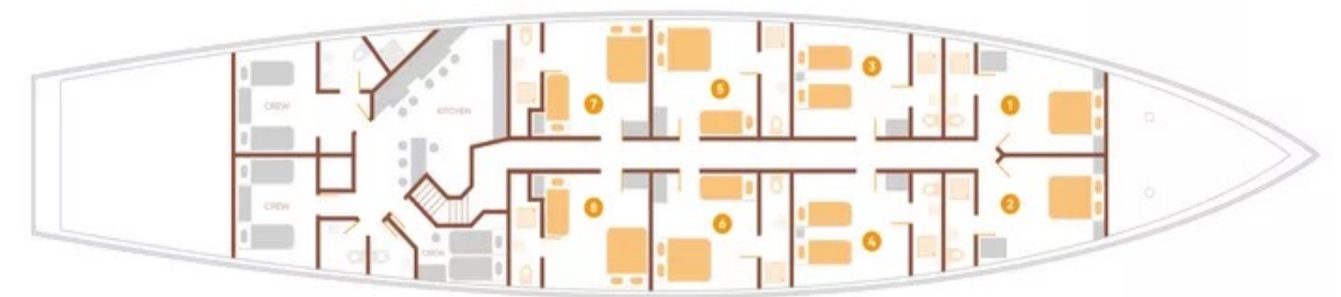
CABINS 9 AND 10 TWIN OR DOUBLE
 CABINS 11 AND 12 DOUBLE

MAIN DECK



KEY
 A - DIVE DECK
 B - BAR
 C - CAMERA CHARGING AREA
 D - STAIRCASE
 E - DINING AREA

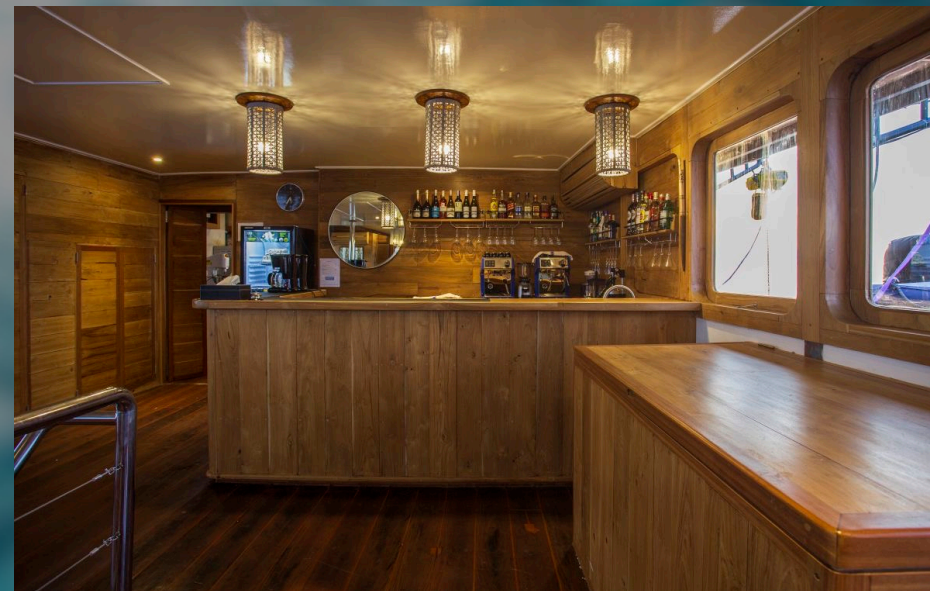
LOWER DECK



CABINS 1 AND 2 DOUBLE
 CABINS 3 AND 4 TWIN
 CABINS 5, 6, 7 AND 8 DOUBLE PLUS SINGLE

EMPEROR HARMONI BOAT FACILITY

- Main deck: Air-conditioned lounge; comfy sofas, 49" HD flat screen with digital movie, music and book library; board games. Internationally stocked bar and spacious dining area. Camera charging area.
- Upper deck: Outdoor seating with beanbags and sunbeds.
- WiFi: Complementary, but limited. If you want to buy more, you can do it on board, but we recommend that you buy a simcard at the airport.



EMPEROR HARMONI DIVING FACILITIES

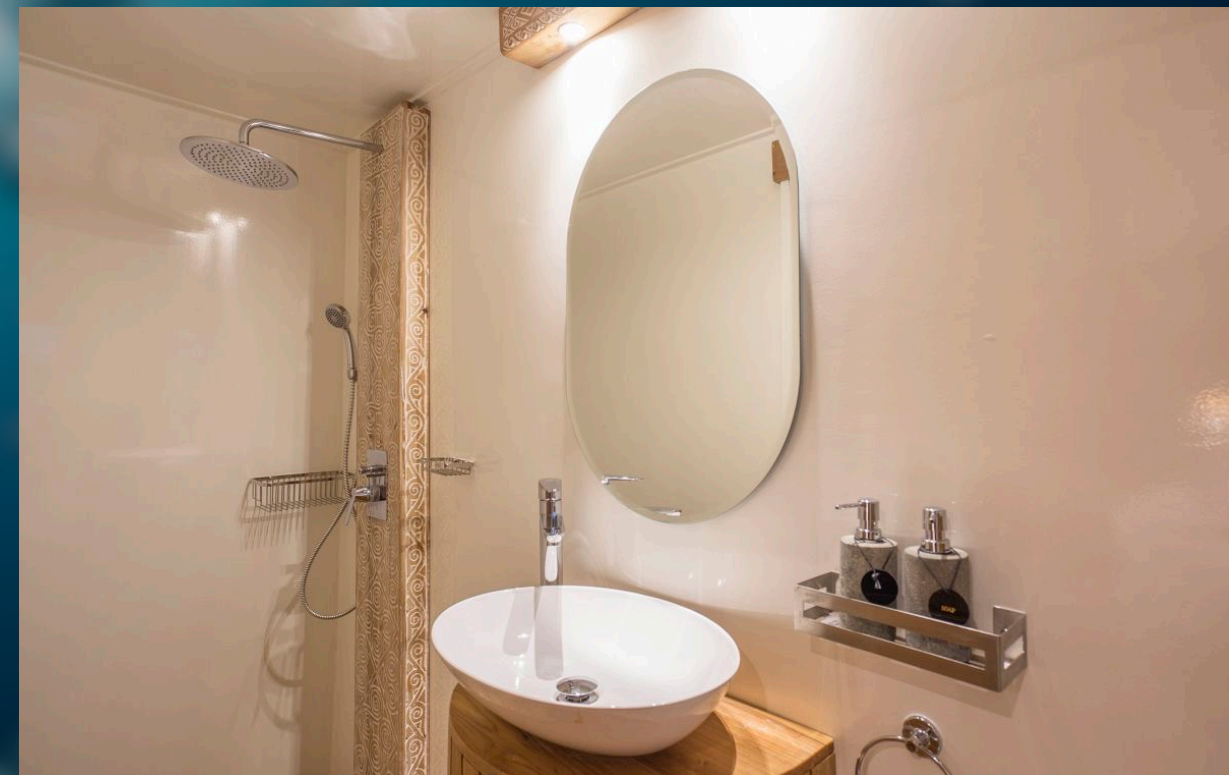
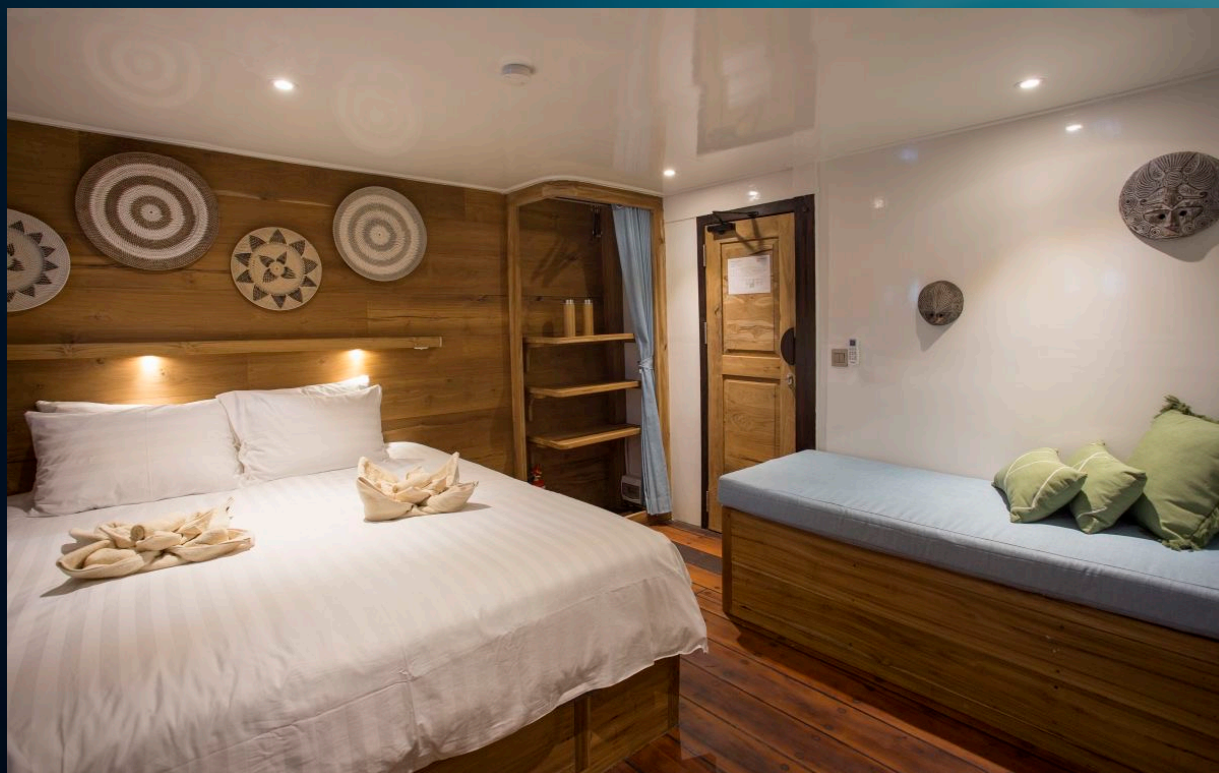
- Up to 4 dive guides.
- Diving Tender: 3 x 5m RIB with 50 Hp outboard and ladders.
- Dive equipment rental: Full range on offer; must be arranged before arrival in resort. All divers are required to use a dive computer and SMB for every dive and a torch each for night dives.
- Dive tanks: Equipped with 12 litre Aluminium tanks as standard and 15 litre Aluminium tanks on request. FREE Nitrox.
- PADI courses available: PADI Discover Scuba, Advanced Open Water, Nitrox Speciality.
- Medical: Oxygen, comprehensive First Aid and AED available.
- Camera facilities: Charging stations, air gun, rinse tanks and camera table.



EMPEROR HARMONI LOWER DECK TWIN

5.940€

Lower deck twin cabins are approx. 12sqm with port holes and individually controlled air con. 2 cabins have twin beds and 4 cabins have both a double and single bed. Cabins 7 & 8 are best suited to a couple or family share. All cabins have an ensuite bathroom with shower. 2 cabin and 1 deck towel per guest.



EMPEROR HARMONI LOWER DECK DOUBLE

5.940€



Lower deck double cabins are approx. 9sqm, with port holes, a double bed and individually controlled air con. Ensuite bathroom with shower. 2 cabin and 1 deck towel per guest.

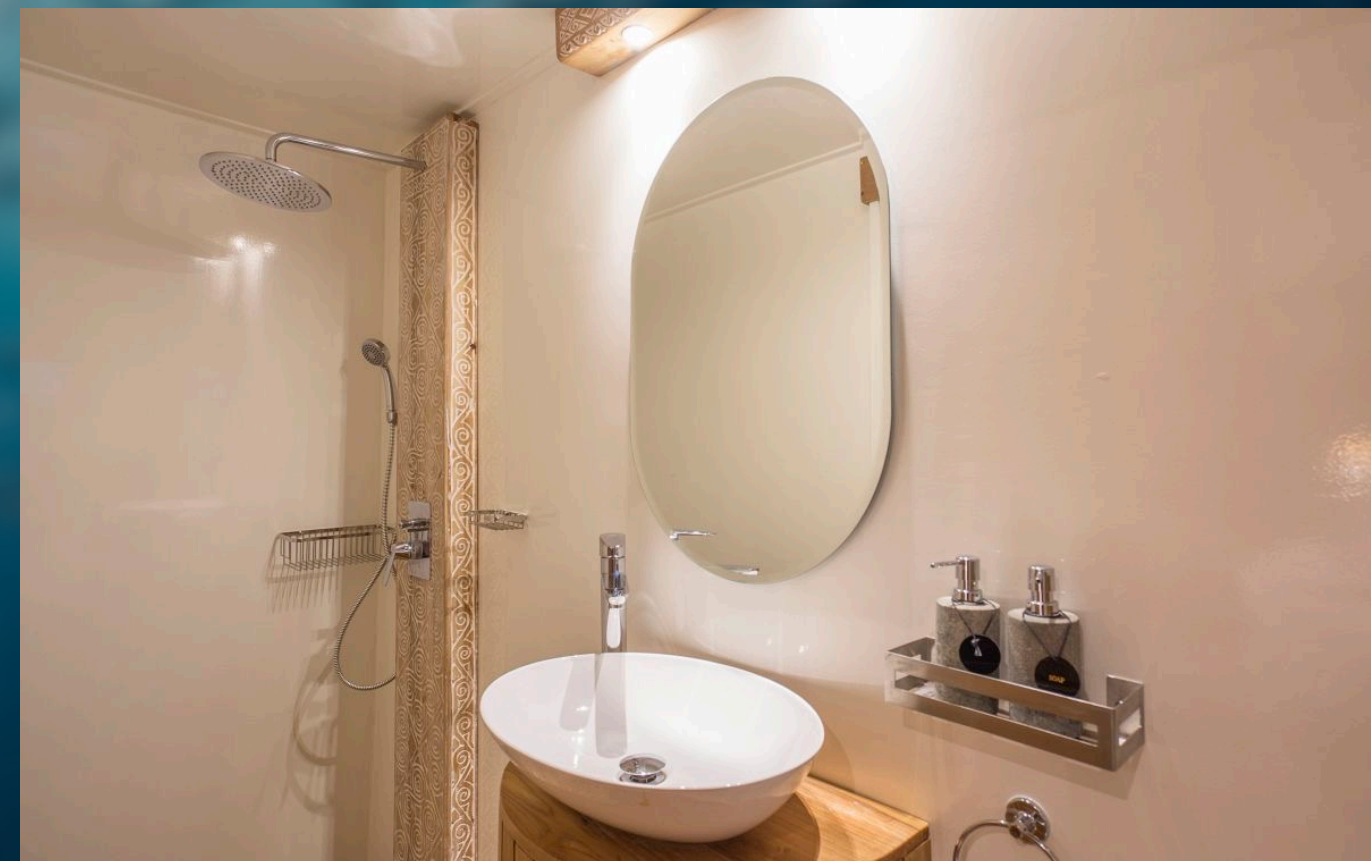


EMPEROR HARMONI UPPER DECK TWIN

6.540€



Upper deck twin cabins are approx. 10sqm with windows, twin beds which can be converted to a double bed on request and individually controlled air con. Ensuite bathroom with shower. 2 cabin and 1 deck towel per guest.



EMPEROR HARMONI UPPER DECK DOUBLE

6.540€



Upper deck double cabins are approx. 14sqm with windows, a double bed and individually controlled air con. Ensuite bathroom with shower. 2 cabin and 1 deck towel per guest.





MORE INFO

Currency

The national currency of Indonesia is Rupia (IDR) but you can easily pay with US-Dollar (USD) and Euros (EUR). Visa and Mastercard are also widely accepted.

Visa on Arrival

You do not need to apply for a visa prior to traveling. Visitors of all nationalities can get a 30 day visa for \$35 USD upon arrival at the airport in Indonesia (but optional you can get a visa online prior to traveling).

We will update you if there are changes to required immigration documentation.

Airport

Arriving - Dominique Eduard Osok, Sorong (SOQ)

Departing - Pattimura, Ambon (AMQ)

The best combination to/from Sorong and to/from Ambon is taking a direct flight to/from Jakarta. The airlines that fly from Jakarta are Garuda (most reliable), Lion Air, Air Asia and Batik Air.

Because of the remoteness of our dive destination, we recommend you to arrive one day prior to trip start, in case you miss a flight or any luggage delays.

If you need advice, we are happy to help!

Climate

	Min °C	Min °C	Rain (mm)
Jan	24	31	221
Feb	25	31	218
Mar	24	31	223
Apr	25	31	236
May	24	30	336
Jun	24	30	335
Jul	24	30	309
Aug	24	30	265
Sep	24	30	221
Oct	24	31	196
Nov	25	32	182
Dec	24	31	194

We recommend 3 to 5 mm wetsuits because the average water temperatures are: 24 - 28 C (74 - 82F)

Electricity

In Indonesia the power plugs are of type C and F. The standard voltage is 220 V and the frequency is 50 Hz. In Indonesia, the plugs are two-pin, like in most countries in Europe.

We recommend that you always travel with an adapter in case you make a stopover in a country with other types of plugs.

If you need advice, we are happy to help!

Clothing

Light fabrics like linen, cotton and athletic gear made to take the heat are best. There are no dress requirements aboard, however, when on land modest clothing and covered shoulders are recommended.

Indonesian Law

In Indonesia, it is recommended to wear clothing that covers your shoulders and knees, especially in mosques.

Loving affection or kissing in public is not recommended. If you are in a tourist resort, no problem.

Drinking alcohol in places that are not licensed restaurants or hotels is punishable by law, so we recommend you to not drink alcohol on the street.

Indonesia has one of the strictest anti-drug laws in the world.

Included

- Transport from airport to boat - boat to airport
- Coordinator from Carlu Travel
- 13 days & 12 nights on a Liveabaord
- 3 meals a day & water & juice & snacks
- 23-28 dives (depending on weather conditions)
- 12 liter tanks, weights & weight belts
- Nitrox (EANX)
- Diveguides
- Marine Park Fees
- Port Fees
- Fuel Fees
- Local Taxes
- Professional Pictures and Videos of the trip

Not Included

- Flights
- Rental equipment
- Dive insurance (*you can book with Carlu Travel)
- Travel insurance
- Tips for the crew
- Alcoholic drinks
- Anything not written in the included section

Price

LOWER DECK

5.940€

UPPER DECK

6.540€

The Trip has a capacity for 24 guests. Reservations are confirmed in order that the bookings are received. To book your reservation, please email us at info@carludiveandtravel.com. Please include the following details.

- Full name
- Favorite cabin
- Date of birth
- Nationality
- Passport number
- Diver Medical Form
- Diving level, number of logged dive, date of last dive
- Equipment requirements with sizes (please include height, weight and shoe size)

Once your booking is received, there are two payment options for your invoice.

1. Full payment at time of booking.
2. 1000 Euro deposit at time of booking. Additional 25% due six months prior to departure. Your balance must be paid in full later than 90 days prior to departure.

*Please fill out a divers medical form. For your safety, and that of others who may dive with you, answer all questions honestly.

Reserve your spot!



ADD SOME DEPTH INTO YOUR LIFESTYLE



www.carludiveandtravel.com



+56 9 5637 6727



info@carludiveandtravel.com



@carlutravel

